

| Part | L (μH) | Tol % | Q Min. (**MHz) | SRF Min. (MHz) | RDC MAX (Ω) | IDC IN (mA) |
|-------------|-----------------|----------|-------------------|----------------------|-------------------|-------------------|
| NL2220T-1R0 | 1.0 @7.96MHz | K | 10 | 95 | 0.03 | 1800 |
| NL2220T-1R2 | 1.2 @7.96MHz | K | 10 | 70 | 0.03 | 1700 |
| NL2220T-1R5 | 1.5 @7.96MHz | K | 10 | 55 | 0.04 | 1600 |
| NL2220T-1R8 | 1.8 @7.96MHz | K | 10 | 47 | 0.05 | 1400 |
| NL2220T-2R2 | 2.2 @7.96MHz | K | 10 | 42 | 0.06 | 1300 |
| NL2220T-2R7 | 2.7 @7.96MHz | K | 10 | 37 | 0.07 | 1200 |
| NL2220T-3R3 | 3.3 @7.96MHz | K | 10 | 34 | 0.08 | 1120 |
| NL2220T-3R9 | 3.9 @7.96MHz | K | 10 | 32 | 0.09 | 1050 |
| NL2220T-4R7 | 4.7 @7.96MHz | K | 10 | 29 | 0.11 | 950 |
| NL2220T-5R6 | 5.6 @7.96MHz | K | 10 | 26 | 0.13 | 880 |
| NL2220T-6R8 | 6.8 @7.96MHz | K | 10 | 24 | 0.15 | 810 |
| NL2220T-8R2 | 8.2 @7.96MHz | K | 10 | 22 | 0.18 | 750 |
| NL2220T-100 | 10 @2.52MHz | K | 10 | 19 | 0.21 | 690 |
| NL2220T-120 | 12 @2.52MHz | K | 10 | 17 | 0.25 | 630 |
| NL2220T-150 | 15 @2.52MHz | K | 10 | 16 | 0.3 | 580 |
| NL2220T-180 | 18 @2.52MHz | K | 10 | 14 | 0.36 | 530 |
| NL2220T-220 | 22 @2.52MHz | K | 10 | 13 | 0.43 | 480 |
| NL2220T-270 | 27 @2.52MHz | K | 10 | 11.5 | 0.52 | 440 |
| NL2220T-330 | 33 @2.52MHz | K | 10 | 10.5 | 0.62 | 400 |
| NL2220T-390 | 39 @2.52MHz | K | 10 | 9.5 | 0.72 | 370 |
| NL2220T-470 | 47 @2.52MHz | K | 10 | 8.5 | 0.85 | 340 |
| NL2220T-560 | 56 @2.52MHz | K | 10 | 7.8 | 1 | 310 |
| NL2220T-680 | 68 @2.52MHz | K | 10 | 7 | 1.2 | 290 |
| NL2220T-820 | 82 @2.52MHz | K | 10 | 6.4 | 1.4 | 270 |
| NL2220T-101 | 100 @0.796MHz | K | 20 | 6 | 1.6 | 250 |
| NL2220T-121 | 120 @0.796MHz | K | 20 | 5.4 | 1.9 | 230 |
| NL2220T-151 | 150 @0.796MHz | K | 20 | 4.8 | 2.2 | 210 |
| NL2220T-181 | 180 @0.796MHz | K | 20 | 4.4 | 2.8 | 190 |
| NL2220T-221 | 220 @0.796MHz | K | 20 | 3.9 | 3.4 | 170 |
| NL2220T-271 | 270 @0.796MHz | K | 20 | 3.6 | 4.2 | 155 |
| NL2220T-331 | 330 @0.796MHz | K | 20 | 3.2 | 4.9 | 140 |
| NL2220T-391 | 390 @0.796MHz | K | 20 | 2.9 | 5.8 | 130 |
| NL2220T-471 | 470 @0.796MHz | K | 20 | 2.6 | 7 | 120 |
| NL2220T-561 | 560 @0.796MHz | K | 20 | 2.4 | 8.5 | 110 |
| NL2220T-681 | 680 @0.796MHz | K | 20 | 2.2 | 10 | 100 |
| NL2220T-821 | 820 @0.796MHz | K | 20 | 2 | 13 | 90 |
| NL2220T-102 | 1000 @0.252MHz | K | 20 | 1.8 | 15 | 85 |
| NL2220T-122 | 1200 @0.252MHz | K | 30 | 1.5 | 17 | 75 |
| NL2220T-152 | 1500 @0.252MHz | K | 30 | 1.4 | 20 | 70 |
| NL2220T-182 | 1800 @0.252MHz | K | 30 | 1.3 | 30 | 60 |
| NL2220T-222 | 2200 @0.252MHz | K | 30 | 1.2 | 35 | 55 |
| NL2220T-272 | 2700 @0.252MHz | K | 30 | 1.1 | 55 | 45 |
| NL2220T-332 | 3300 @0.252MHz | K | 30 | 1 | 60 | 40 |
| NL2220T-392 | 3900 @0.252MHz | K | 30 | 1 | 70 | 38 |
| NL2220T-472 | 4700 @0.252MHz | K | 30 | 0.9 | 78 | 36 |
| NL2220T-562 | 5600 @0.252MHz | K | 30 | 0.8 | 85 | 33 |
| NL2220T-682 | 6800 @0.252MHz | K | 30 | 0.7 | 110 | 30 |
| NL2220T-822 | 8200 @0.252MHz | K | 30 | 0.6 | 125 | 28 |
| NL2220T-103 | 10000 @79.60kHz | K | 20 | 0.5 | 150 | 25 |

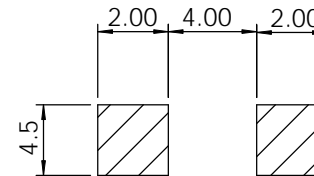
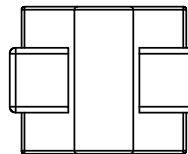
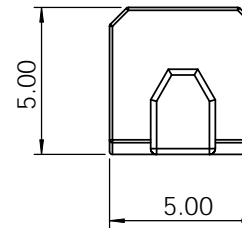
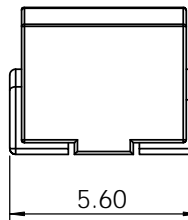
SPECIFICATION

TYPE = NL2220
CONSTRUCTION = MOULDED RESIN CHIP
TERMINAL COATING = SILVER/NICKEL PLATE
OPERATING TEMP. = -40 TO +85 °C
STORAGE TEMP = -55 TO +125 °C
INSULATION RESISTANCE = 100MΩ. 100V TERMINAL-CORE
DIELECTRIC STRENGTH = 250Vac TERMINAL-CORE
HUMIDITY EFFECTS = L±5 @ 95%RH, 40 °C, 1HR
Q±5 @ 95%RH, 40 °C, 1HR

PACKAGING = 1000PCS/REEL
MARKING = 3CHARACTERS, VALUE

NOTE

TOLERANCES J=5%; K=10%.
** = TEST FREQUENCY AS SPECIFIED IN 'L' COLUMN



| | | | |
|--|--|------|--|
| PROPRIETARY AND CONFIDENTIAL THE INFORMATION CONTAINED IN THIS DRAWING IS THE SOLE PROPERTY OF AIT COMPONENTS LTD. ANY REPRODUCTION IN PART OR AS A WHOLE WITHOUT THE WRITTEN PERMISSION OF AIT COMPONENTS LTD IS STRICTLY PROHIBITED. | NAME | DATE | AIT COMPONENTS LTD www.aitcomponents.com TITLE: NL2220 SERIES CHIP COIL |
| | DRAWN | | |
| | CHECKED | | |
| | ENG APPR. | | |
| MATERIAL | UNLESS OTHERWISE SPECIFIED DIMENSIONS ARE IN MILLIMETERS TOLERANCES: ONE PLACE DECIMAL +/-0.3 TWO PLACE DECIMAL +/-0.13 ANGLE +/-1 DEGREE | | SIZE A DWG. NO. NL2220 SERIES CHIP COIL REV. 00 |
| FINISH | DO NOT SCALE DRAWING | | SCALE:1:1 SHEET 1 OF 1 |