

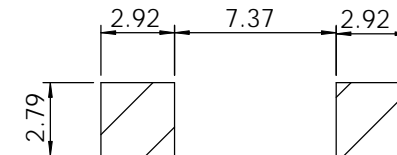
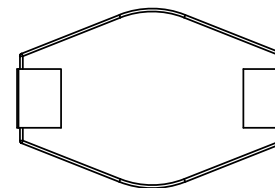
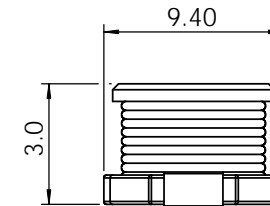
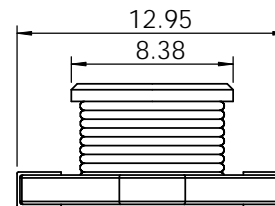
Part	L (μ H)	Tol %	R _{DC} MAX (Ω)	I _{DC} I _N (A)
DO3308T-100	10 @100 kHz	M	0.09	2.4
DO3308T-150	15 @100 kHz	M	0.12	2
DO3308T-220	22 @100 kHz	M	0.19	1.6
DO3308T-330	33 @100 kHz	M	0.25	1.4
DO3308T-470	47 @100 kHz	M	0.32	1
DO3308T-680	68 @100 kHz	M	0.55	0.9
DO3308T-101	100 @100 kHz	M	0.7	0.7
DO3308T-151	150 @100 kHz	M	1	0.6
DO3308T-221	220 @100 kHz	M	1.6	0.5
DO3308T-331	330 @100 kHz	M	2.2	0.4
DO3308T-471	470 @100 kHz	M	3.3	0.3
DO3308T-681	680 @100 kHz	M	4.4	0.2
DO3308T-102	1000 @100 kHz	M	7	0.1

SPECIFICATION

TYPE = DO3308
 CONSTRUCTION = SURFACE MOUNT POWER INDUCTOR
 TERMINAL COATING = NICKEL ALLOY OVER PHOS BRONZE
 OPERATING TEMP. = -40 TO +85 °C
 STORAGE TEMP = -55 TO +125 °C
 INSULATION RESISTANCE = 100M Ω m. 100V TERMINAL-CORE
 DIELECTRIC STRENGTH = 250Vac TERMINAL-CORE
 HUMIDITY EFFECTS = L \pm 5 @ 95%RH, 40 °C, 1HR
 Q \pm 5 @ 95%RH, 40 °C, 1HR
 PACKAGING = 1000PCS/REEL
 MARKING = 3 CHARACTERS, VALUE

NOTE

TOLERANCE M=20%.



PROPRIETARY AND CONFIDENTIAL THE INFORMATION CONTAINED IN THIS DRAWING IS THE SOLE PROPERTY OF AIT COMPONENTS LTD. ANY REPRODUCTION IN PART OR AS A WHOLE WITHOUT THE WRITTEN PERMISSION OF AIT COMPONENTS LTD IS STRICTLY PROHIBITED.		NAME	DATE	AIT COMPONENTS LTD www.aitcomponents.com
	DRAWN			
	CHECKED			TITLE:
	ENG APPR.			DO3308 SMD POWER INDUCTOR
MATERIAL	--	UNLESS OTHERWISE SPECIFIED DIMENSIONS ARE IN MILLIMETERS TOLERANCES: ONE PLACE DECIMAL \pm 0.3 TWO PLACE DECIMAL \pm 0.13 ANGLE \pm 1 DEGREE		SIZE A DWG. NO. DO3308 SMD POWER INDUCTOR REV. 00
FINISH	--	DO NOT SCALE DRAWING		SCALE:1:1 SHEET 1 OF 1