

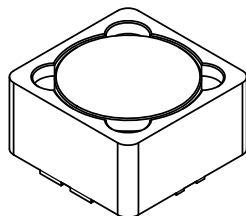
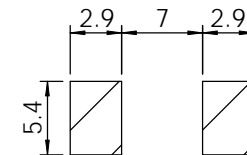
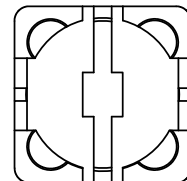
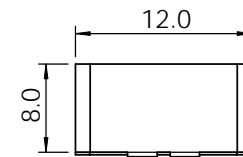
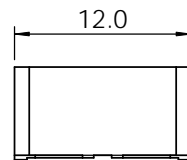
Part	L (μ H)	Tol %	R _{DC} MAX (Ω)	I _{bc} I _N (A)
CDRH127-2R4	2.4 @ 100 kHz	M	0.01	8
CDRH127-3R5	3.5 @ 100 kHz	M	0.01	7.5
CDRH127-4R7	4.7 @ 100 kHz	M	0.02	6.8
CDRH127-6R1	6.1 @ 100 kHz	M	0.02	6.6
CDRH127-7R6	7.6 @ 100 kHz	M	0.02	5.9
CDRH127-100	10 @ 1.0 kHz	M	0.02	5.4
CDRH127-150	15 @ 1.0 kHz	M	0.03	4.5
CDRH127-180	18 @ 1.0 kHz	M	0.04	3.9
CDRH127-220	22 @ 1.0 kHz	M	0.04	3.6
CDRH127-330	33 @ 1.0 kHz	L,M	0.06	3
CDRH127-390	39 @ 1.0 kHz	L,M	0.07	2.75
CDRH127-470	47 @ 1.0 kHz	L,M	0.1	2.5
CDRH127-560	56 @ 1.0 kHz	L,M	0.11	2.35
CDRH127-680	68 @ 1.0 kHz	L,M	0.14	2.1
CDRH127-820	82 @ 1.0 kHz	L,M	0.16	1.95
CDRH127-101	100 @ 1.0 kHz	L,M	0.22	1.7
CDRH127-121	120 @ 1.0 kHz	L,M	0.25	1.6
CDRH127-151	150 @ 1.0 kHz	L,M	0.28	1.42
CDRH127-181	180 @ 1.0 kHz	L,M	0.35	1.3
CDRH127-221	220 @ 1.0 kHz	L,M	0.39	1.16
CDRH127-271	270 @ 1.0 kHz	L,M	0.56	1.06
CDRH127-331	330 @ 1.0 kHz	L,M	0.64	0.95
CDRH127-471	470 @ 1.0 kHz	L,M	0.98	0.79
CDRH127-561	560 @ 1.0 kHz	L,M	1.07	0.73
CDRH127-681	680 @ 1.0 kHz	L,M	1.46	0.67
CDRH127-821	820 @ 1.0 kHz	L,M	1.64	0.6
CDRH127-102	102 @ 1.0 kHz	L,M	1.82	0.55

SPECIFICATION

- TYPE = CDRH127
CONSTRUCTION = SURFACE MOUNT POWER INDUCTOR
TERMINAL COATING = NICKEL / SILVER
OPERATING TEMP. = -40 TO +85 °C
STORAGE TEMP = -55 TO +125 °C
INSULATION RESISTANCE = 100MOhm. 100V TERMINAL-CORE
DIELECTRIC STRENGTH = 250Vac TERMINAL-CORE
HUMIDITY EFFECTS = L±5 @ 95%RH, 40 °C, 1HR
= Q±5 @ 95%RH, 40 °C, 1HR
PACKAGING = 500PCS/REEL
MARKING = 3 CHARACTERS, VALUE

NOTE

TOLERANCES L=15%; M=20%; N=30%



PROPRIETARY AND CONFIDENTIAL THE INFORMATION CONTAINED IN THIS DRAWING IS THE SOLE PROPERTY OF AIT COMPONENTS LTD. ANY REPRODUCTION IN PART OR AS A WHOLE WITHOUT THE WRITTEN PERMISSION OF AIT COMPONENTS LTD IS STRICTLY PROHIBITED.	NAME	DATE	AIT COMPONENTS LTD www.aitcomponents.com
	DRAWN		
	CHECKED		
	MATERIAL	UNLESS OTHERWISE SPECIFIED DIMENSIONS ARE IN MILLIMETERS TOLERANCES: ONE PLACE DECIMAL +/-0.3 TWO PLACE DECIMAL +/-0.13 ANGLE +/-1 DEGREE	
FINISH	DO NOT SCALE DRAWING	SIZE A DWG. NO. CDRH127 SMD POWER INDUCTOR	REV. 00
SCALE:1:1		SHEET 1 OF 1	