

.098" (2.50mm) Center Crimp Terminal Housing

8000 Series

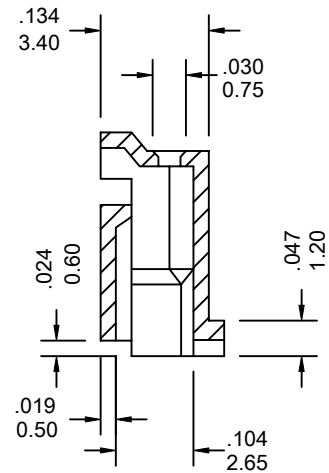
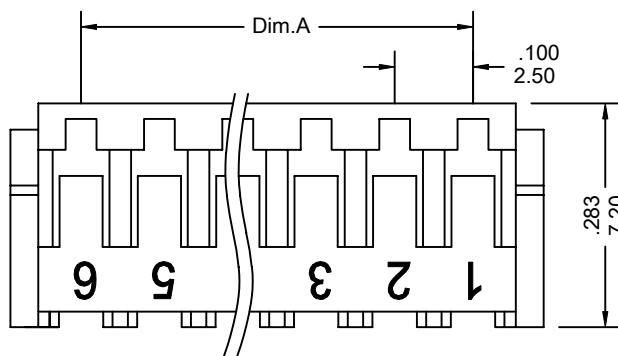
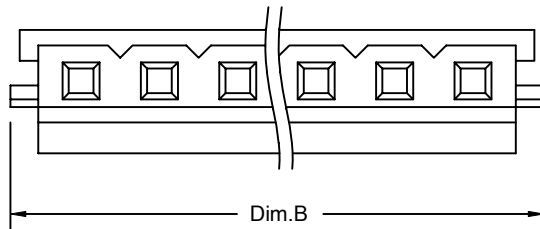
FEATURES:

- . 2-15 Circuits
- . Nylon 66, [UL 94V-0]
- . Accepts double cantilever crimp terminal [8000-T]
- . Mates with 8600 series wafers polarized

SPECIFICATIONS:

- . Current rating: 3A AC, DC
- . Voltage rating: 250V AC, Maximum
- . Temperature range: -25°C ~ +85°C
- . Contact resistance: Initial Value/10mΩ max.
After environmental testing
/20mΩ max.
- . Insulation resistance: 1000 MΩ min
- . Withstand Voltage: 800V AC/minute
- . Applicable wires: AWG #22 ~ #30

UNIT: INCH
MM



Ordering Information 8000 Series

Series No.	No. of Contacts	
8000	- 04P - A	
8000 Series	02P ~ 15P	RoHs

Dimensional Information

Circuits	Dim.A± .008 0.20	Dim.B± .012 0.30	Circuits	Dim.A± .008 0.20	Dim.B± .012 0.30	Circuits	Dim.A± .008 0.20	Dim.B± .012 0.30
2	.098 2.50	.275 7.00	3	.197 5.00	.374 9.50	4	.295 7.50	.472 12.0
8000 Series * FOR CIRCUIT SIZES 5 THROUGH 15 ADD .098" OR 2.50MM FOR EACH ADDITIONAL PIN.								