

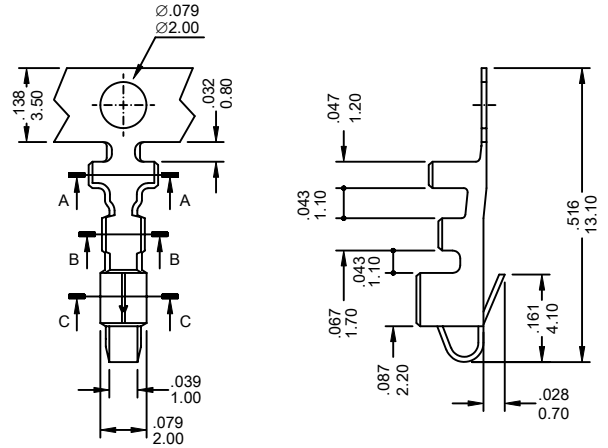
## 6400-T Series

### FEATURES:

- . Mates with VEN [6400] Series Female connector
- . Accepts AWG 22-30 wire range
- . Material is Brass or Phos.Bronze
- . Qty/Reel: 7K PCS

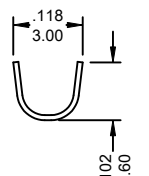
UNIT: INCH  
MM

Wire Gauge (AWG)	22	24	26	28	30
Pull Out Force (lb)	10	8	6	4	3

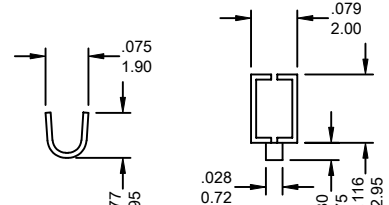


### Ordering Information 6400-T Series

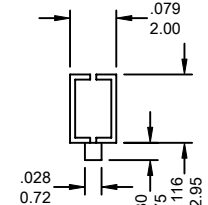
Series No.	Material	Contact Plating	
6400-T	BS	T	PB
6400-T Series	BS: Brass PS: Phos.Bronze	T: Tin S1: Gold Flash S5: 5u" Gold S10: 10u" Gold S15: 15u" Gold S30: 30u" Gold [S: Selective Gold]	RoHs



A-A



B-B



C-C

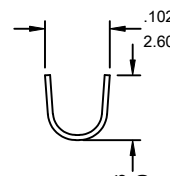
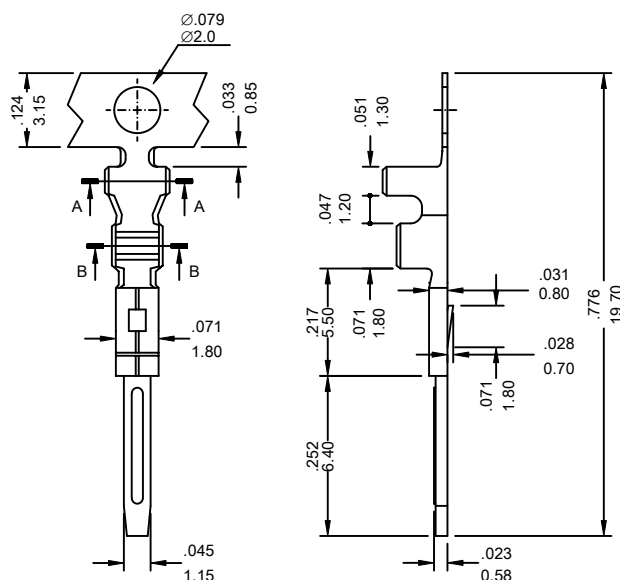
## 6500-T Series

### FEATURES:

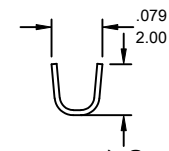
- . Mates with VEN [6500] Series Female connector
- . Accepts AWG 22-30 wire range
- . Material is Brass or Phos.Bronze
- . Qty/Reel: 7K PCS

UNIT: INCH  
MM

Wire Gauge (AWG)	22	24	26	28	30
Pull Out Force (lb)	10	8	6	4	3



A-A



B-B

### Ordering Information 6500-T Series

Series No.	Material	Contact Plating	
6500-T	BS	T	PB
6500-T Series	BS: Brass PS: Phos.Bronze	T: Tin S1: Gold Flash S5: 5u" Gold S10: 10u" Gold S15: 15u" Gold S30: 30u" Gold [S: Selective Gold]	RoHs