

.200" (5.08mm) Center Crimp Terminal Housing

5080 Series

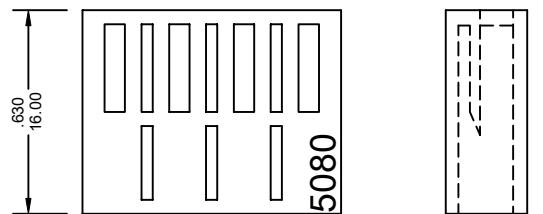
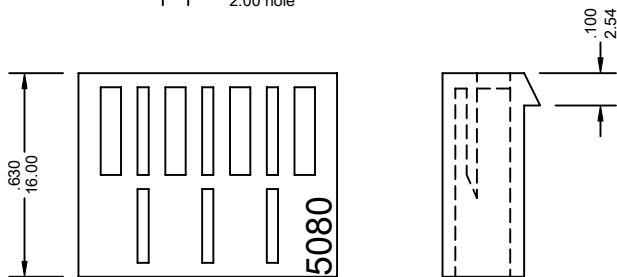
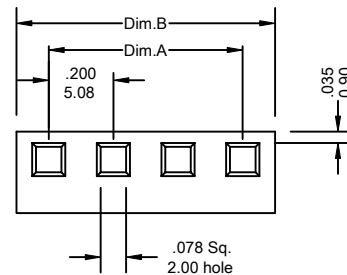
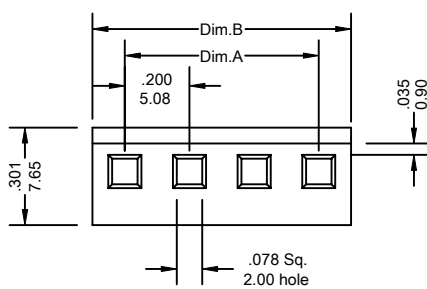
FEATURES:

- . 1-20 Circuits
- . With or Without locking ramp
- . Nylon [UL 94V-2] or [UL 94V-0]
- . Mates with .045[1.14mm] square or round pins
- . Accepts double cantilever crimp terminal [2410-T or 2410-TA]
- . Housing available with integrally molded polarizing key 2410-K
- . Terminal Retention to Housing-8lbs. [3.63kg] Minimum
- . Mates with VEN 4508 and 2508 wafer

SPECIFICATIONS:

- . Current rating: 7A AC, DC
- . Voltage rating: 250V AC, Maximum
- . Temperature range: -40°C ~+ 105°C
- . Contact resistance: Initial Value/10mΩ max.
After environmental testing /20mΩ max.
- . Insulation resistance: 5000 MΩ min
- . Withstand Voltage: 1500V AC/minute
- . Applicable wires: AWG #22-#18

UNIT: INCH
MM



(Y: With Locking Ramp)

(N: Without Locking Ramp)

Ordering Information 5080 Series

Series No.	No. of Contacts	Polarizing Rib	Material	
5080	- 04P	Y	V0	- A
5080 Series	01P ~ 20P	Y: With Locking Ramp N: Without Locking Ramp	V0: UL 94V-0, Nylon V2: UL 94V-2, Nylon	RoHs

Dimensional Information

Circuits	Dim.A± .008 0.20	Dim.B± .008 0.20	Circuits	Dim.A± .008 0.20	Dim.B± .008 0.20	Circuits	Dim.A± .008 0.20	Dim.B± .008 0.20
1	—	.200 5.08	2	.200 5.08	.400 10.16	3	.400 10.16	.600 15.24

* FOR CIRCUIT SIZES 4 THROUGH 20 ADD .200" OR 5.08MM FOR EACH ADDITIONAL PIN.