

.100" (2.54mm) Center Dual Position Slot Standard Edge Connectors



3600 Series

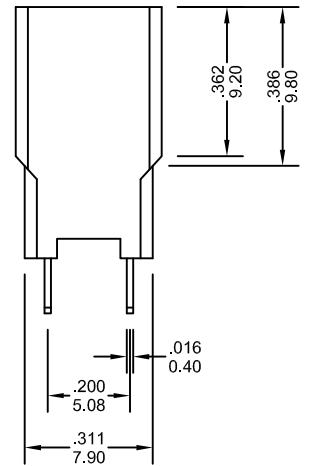
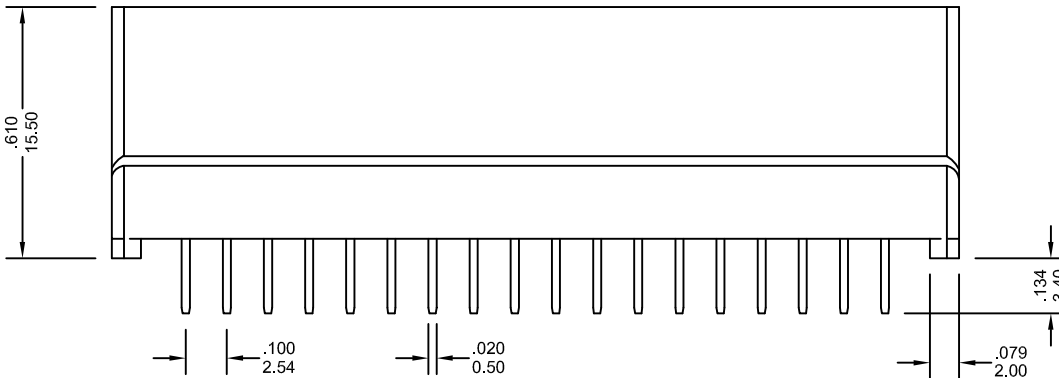
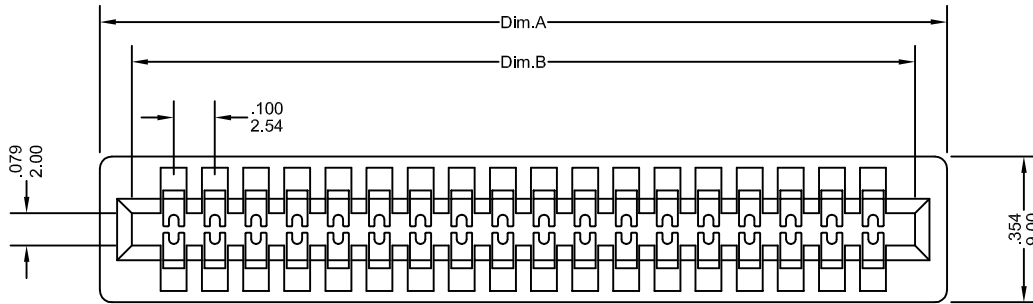
FEATURES:

- .06~120 Circuits
- PBT + 30% Glass Fiber [UL 94V-0]
- High reliable, double loop contact which ensure redundancy and optimum electrical performance
- For easy insertions and extraction to PC card without damaging
- Polarizing between contact and intacts position

SPECIFICATIONS:

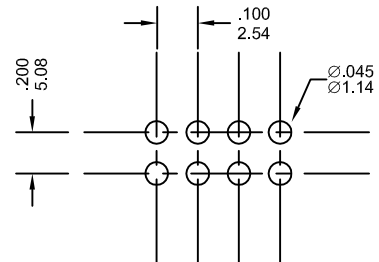
- Current rating: 3A AC, DC
- Voltage rating: 250V AC, Maximum
- Temperatur range: -40°C ~+ 105°C
- Contact resistance: Initial Value/10mΩ max.
After environmental testing /20mΩ max.
- Insulation resistance: 5000 MΩ min
- Withstand Voltage: 1500V AC/minute
- Applicable PC board thickness: .063"[1.6mm]

UNIT: INCH
MM



Ordering Information 3600 Series

Series No.	No. of Contacts	Contact Type	Contact Plating	
3600	- 62P	S	T	- PB
3600 Series	06P ~ 120P	S: Straight	T: Tin G1: Gold Flash G5: 5u" Gold G10: 10u" Gold G15: 15u" Gold G30: 30u" Gold [G: Full Gold]	S: Selective Gold S1: Gold Flash S5: 5u" Gold S10: 10u" Gold S15: 15u" Gold S30: 30u" Gold [S: Selective Gold]
				RoHs



Recommended P.C Board Pattern

Dimensional Information

Circuits	Dim.A± .010 0.25	Dim.B± .010 0.25	Circuits	Dim.A± .010 0.25	Dim.B± .010 0.25	Circuits	Dim.A± .010 0.25	Dim.B± .010 0.25
06	.562 14.28	.400 10.16	08	.662 16.82	.500 12.70	10	.762 19.36	.600 15.24

3600 Series

* FOR CIRCUIT SIZES 12 THROUGH 120 ADD .100" OR 2.54MM FOR EACH ADDITIONAL PIN