

.100"X.600" (2.54mmX15.24mm) Dip Plug Connector



3300 Series

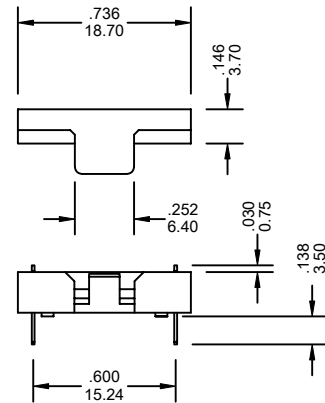
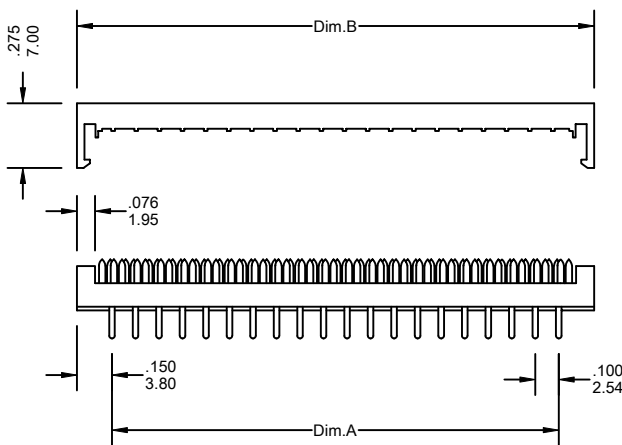
FEATURES:

- . 24-42 Circuits
- . PBT + 30% Glass Fiber [UL 94V-0]
- . Ideal for board-to-board application
- . Compatible with standard dip socket on .100"X.600" [2.54mmX15.24mm]
- . Heavy duty contacts with extra strength
- . Choice of plating options
- . Ribbed base aids cable positioning
- . Quick termination

SPECIFICATIONS:

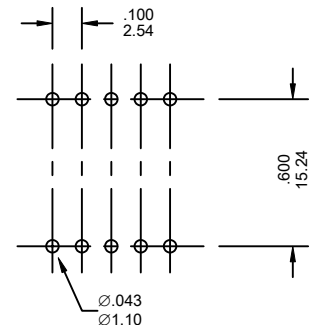
- . Current rating: 3A AC, DC
- . Voltage rating: 250V AC, Maximum
- . Temperature range: -40°C ~ +105°C
- . Contact resistance: Initial Value/10m max.
After environmental testing /20m max.
- . Insulation resistance: 5000 M min
- . Withstand voltage: 1500V AC/minute
- . Applicable wires: AWG 18, 7 strands
.050"[1.27mm] pitch flat cable
- . Applicable PC Board thickness: .063" [1.6mm]

UNIT: INCH
MM



Ordering Information 3300 Series

Series No.	No. of Contacts	Contact Plating	
3300	- 24P	T	- PB
3300 Series	24P 28P 32P 36P 40P 42P	T: Tin G1: Gold Flash S5: 5u" Gold S10: 10u" Gold S15: 15u" Gold S30: 30u" Gold [G: Full Gold] [S: Selective Gold]	RoHs



Recommended P.C. Board Hole

Dimensional Information

Circuits	Dim.A± .008 0.20	Dim.B± .008 0.20	Circuits	Dim.A± .008 0.20	Dim.B± .008 0.20	Circuits	Dim.A± .008 0.20	Dim.B± .008 0.20
24	1.100 27.94	1.399 35.54	32	1.500 38.10	1.799 45.70	40	1.900 48.26	2.199 55.86
28	1.300 33.02	1.599 40.62	36	1.700 43.18	1.999 50.78	42	2.000 50.80	2.299 58.40