

.098" (2.50mm) Center Wafer Assembly

2660 Series

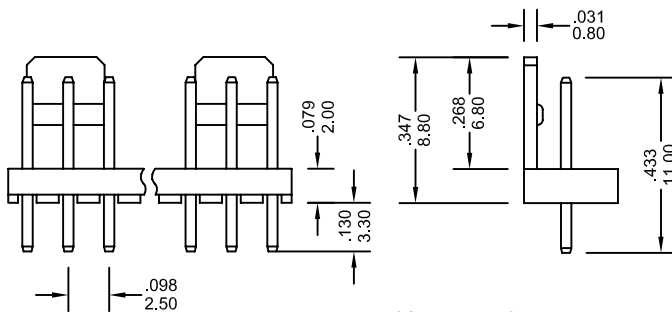
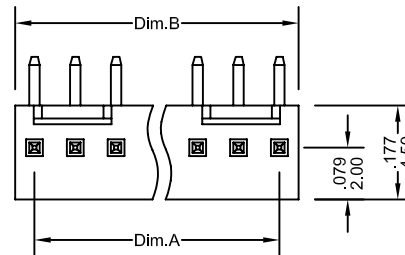
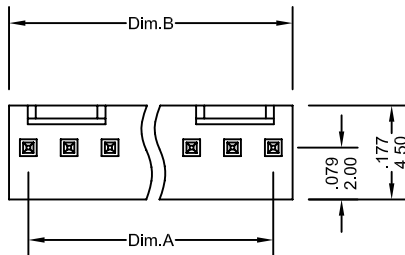
FEATURES:

- . 2-20 Circuits
- . Friction lock
- . Nylon [UL 94V-0]
- . .025"[0.64mm] right angle or straight square wire pins
- . mates With 2560 Housing

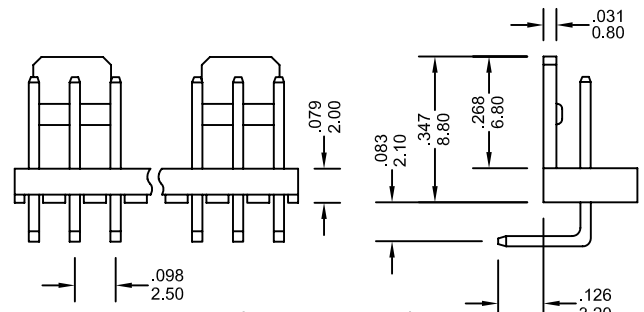
SPECIFICATIONS:

- . Current rating: 3A AC, DC
- . Voltage rating: 250V AC, Maximum
- . Temperature range: -40°C ~ +105°C
- . Contact resistance: Initial Value/10mΩ max.
After environmental testing /20mΩ max.
- . Insulation resistance: 5000 MΩ min
- . Withstand Voltage: 1500V AC/minute
- . Applicable PC board thickness: .063"[1.6mm]

UNIT: INCH
MM



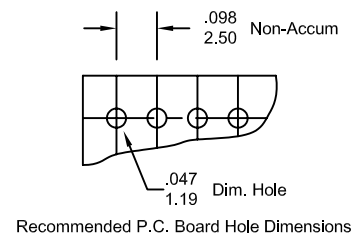
(Straight)



(Right Angle)

Ordering Information 2660 Series

Series No.	No. of Contacts	Contact Type	Contact Plating	
2660	- 04P	S	T	- PB
2660 Series	02P ~ 20P	S: Straight R: Right Angle	T: Tin G1: Gold Flash G5: 5u" Gold G10: 10u" Gold G15: 15u" Gold G30: 30u" Gold [G: Full Gold]	RoHs
* PIN LENGTH CAN BE CHANGED TO CUSTOM'S SPECIFICATION				



Dimensional Information

Circuits	Dim.A± .008 0.20	Dim.B± .008 0.20	Circuits	Dim.A± .008 0.20	Dim.B± .008 0.20	Circuits	Dim.A± .008 0.20	Dim.B± .008 0.20
2	.098 2.50	.197 5.00	3	.197 5.00	.295 7.50	4	.295 7.50	.394 10.00

2660 Series

* FOR CIRCUIT SIZES 5 THROUGH 20 ADD .098" OR 2.50MM FOR EACH ADDITIONAL PIN.