

.098" (2.50mm) Board-to-Board Single Backwall Header



2660-AM Series

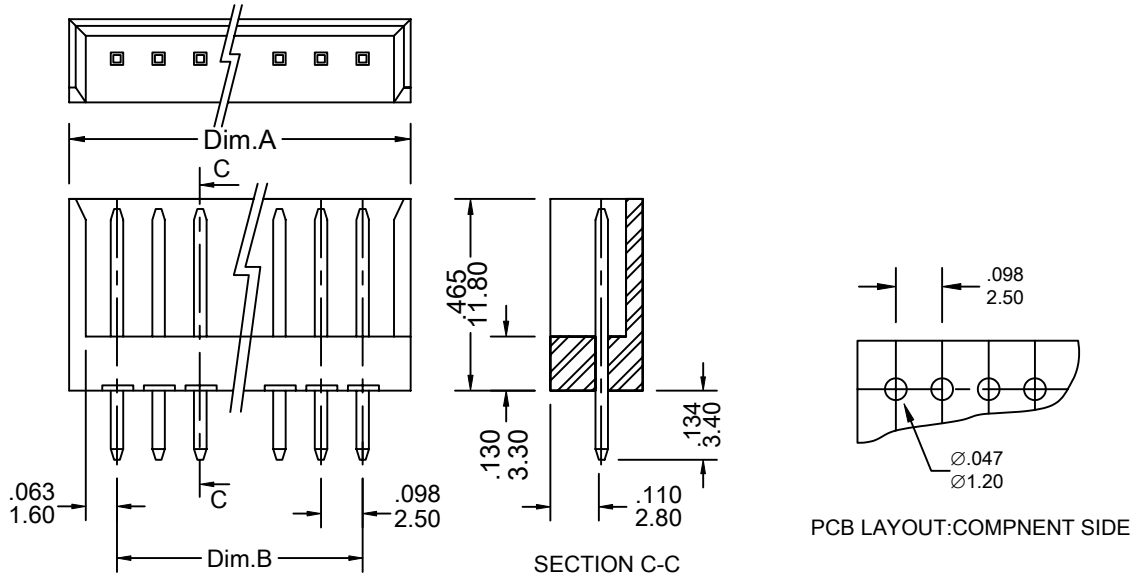
FEATURES:

- . 2-20 Circuits
- . Friction lock
- . Nylon 66 [UL 94V-0]
- . .025"[0.64mm] staight square wire pins
- . Mates with [1250-AM] Series P.C.B CONNECTORS

SPECIFICATIONS:

- . Current rating: 3A AC, DC
- . Voltage rating: 250V AC, Maximum
- . Temperature range: -40°C~ +105°C .
- . Contact resistance: Initial Value/10mΩ max.
After environmental testing /20mΩ max.
- . Insulation resistance: 1000 MΩ min
- . Withstand Voltage: 1000V AC/minute
- . Applicable PC board thickness: .063"[1.6mm]

UNIT: INCH
MM



Ordering Information 2660-AM Series

Series No.	No. of Contacts	Contact Type	Contact Plating	
2660-AM	- 04P	S	T	- PB
2660-AM Series	02P ~ 20P	S: STRAIGHT	T: Tin G1: Gold Flash G5: 5u" Gold G10: 10u" Gold G15: 15u" Gold G30: 30u" Gold [G: Full Gold]	RoHs
* PIN LENGTH CAN BE CHANGED TO CUSTOM'S SPECIFICATION				

Dimensional Information

Circuits	2	3	4	5	6	7	8	9	10	11	12	
Dim.A±	.008 0.20	0.303 7.70	0.410 10.20	0.499 12.70	0.598 15.20	0.696 17.70	0.795 20.20	0.795 22.70	0.992 25.20	1.090 27.70	1.188 30.20	1.287 32.70
Dim.B±	.008 0.20	0.098 2.50	.196 5.00	.295 7.50	0.393 10.00	0.492 12.50	0.592 15.00	0.688 17.50	0.787 20.00	0.885 22.50	0.984 25.00	1.082 27.50

Circuits	13	14	15	16	17	18	19	20	
Dim.A±	.008 0.20	1.385 35.20	1.484 37.70	1.582 40.20	1.681 42.70	1.779 45.20	1.878 47.70	1.976 50.20	2.074 52.70
Dim.B±	.008 0.20	1.181 30.00	1.279 32.50	1.377 35.00	1.476 37.50	1.575 40.00	1.673 42.50	1.772 45.00	1.870 47.50