

.100" (2.54mm) Center Flexible Film Crimp Terminal Housing



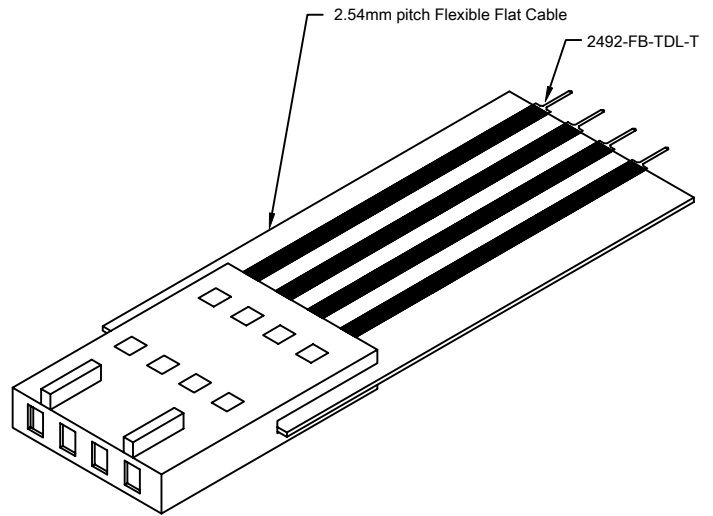
2492-FB Series

FEATURES:

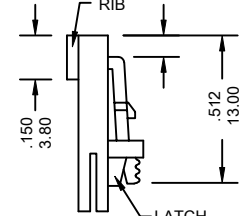
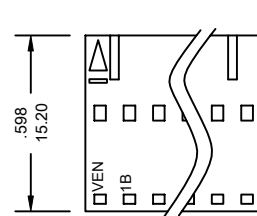
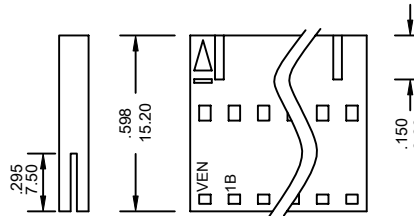
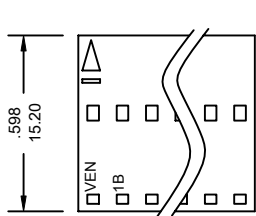
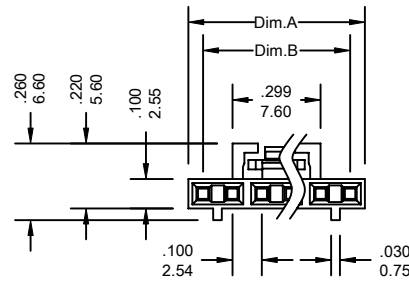
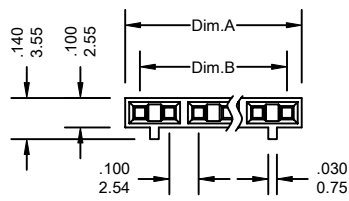
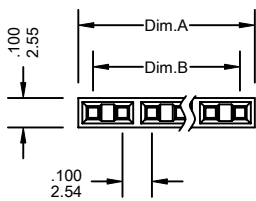
- . 2-25 Circuits
- . With locking ramp or without locking ramp
- . Nylon 66+15% Glass Fiber [UL 94-0]
- . Mates with .025" [0.64mm] pins
- . Accepts double cantilever crimp terminal [2492-FB-TF] [2492-FB-TDL-T] [2492-FB-TDM-T]
- . Terminal retention to housing 6.6lbs [3.0kg] minimum

SPECIFICATIONS:

- . Current rating: 3A AC, DC
- . Voltage rating: 250V AC, Maximum
- . Temperature range: -40°C ~ +105°C
- . Contact resistance: Initial Value/10mΩ max.
After environmental testing /20mΩ max.
- . Insulation resistance: 1000 MΩ min
- . Withstand voltage: 1500V AC/minute
- . Applicable wire: 2.54mm pitch Flexible Flat Conductor Cable



UNIT: INCH
MM



(2492-FB PN)

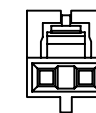
(2492-FB PY)

(2492-FB P)

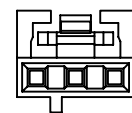
Ordering Information 2492 Series

Series No.	No. of Contacts	Latch and Rzbs	
2492-FB	04	PN	- A
2492-FB Series	02 ~ 25	PN: Without Latch and Ribs PY: With Ribs P: With Latch and Ribs	RoHs

LATCH AND POLARIZATION RIB LOCATION



2 Circuit



3 Circuit

Dimensional Information

Circuits	Dim.A± .008 0.20	Dim.B± .008 0.20	Circuits	Dim.A± .008 0.20	Dim.B± .008 0.20	Circuits	Dim.A± .008 0.20	Dim.B± .008 0.20
2	.200 5.08	.100 2.54	3	.300 7.62	.200 5.08	4	.400 10.16	.300 7.62

2492-FB Series

* FOR CIRCUIT SIZES 5 THROUGH 25 ADD .100" OR 2.54MM FOR EACH ADDITIONAL PIN.