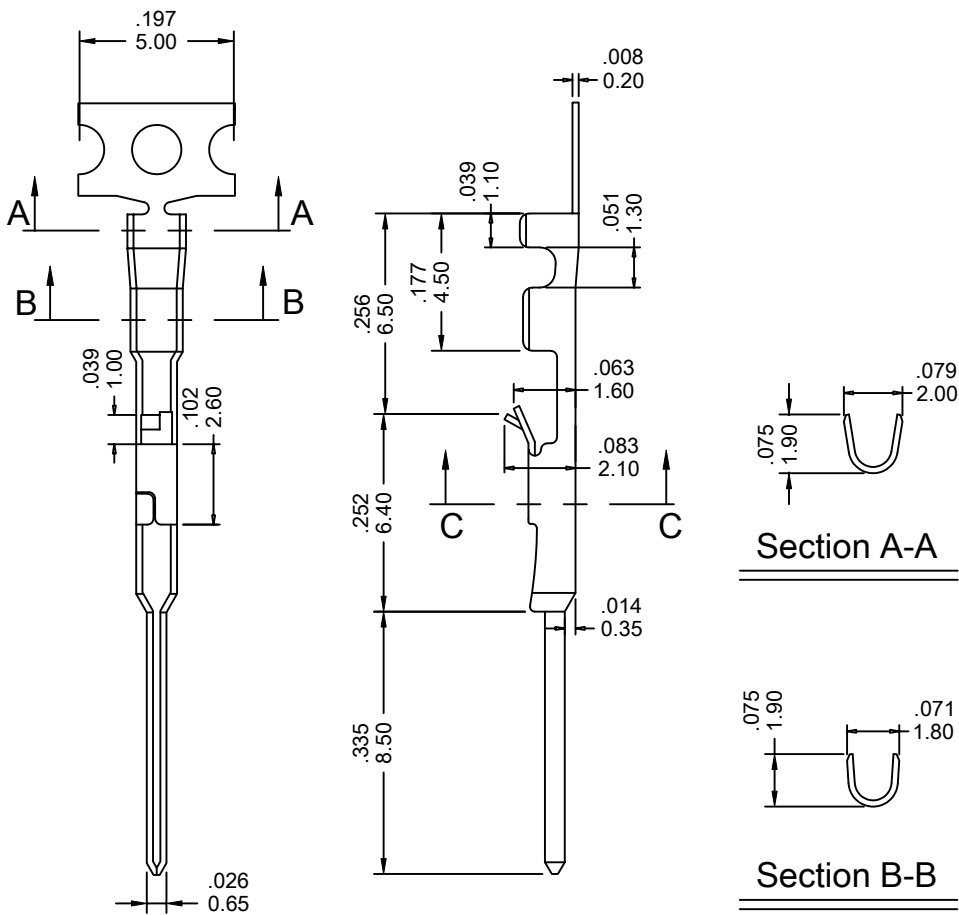


2491-TM Series

FEATURES:

- . 2491-TM Series Mates with VEN [2491-HS] Series male connector
- . Accepts AWG 24-28 wire range
- . Material is Phos. Bronze
- . Qty/Reel: 15K PCS

UNIT: INCH
MM



Ordering Information

Series No.	Material	Contact Plating	
2491-TM	- PS	- T	- PB
2491-TM Series	PS: Phos. Bronze	T: Tin S1: Gold Flash S5: 5u" Gold S10: 10u" Gold S15: 15u" Gold S30: 30u" Gold [S: Selective Gold]	RoHs