

# .079" (2.00mm) Pitch Female Power (Futurebus) Header

## 24884 Series

Right Angle, 5 rows wide body press fit & solder type

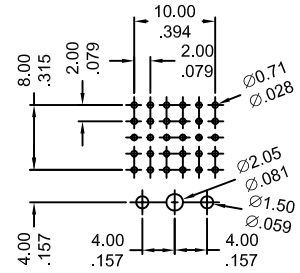
### FEATURES:

- . 10 Circuits
- . Housing: Glass Filled LCP, UL 94V-0
- . Contact: Phosphor Bronze
- . Packaging: Tray
- . Mates With: 25060
- . 10 Circuits modular unit fits into same space and footprint as 30 Circuits signal module
- . Four point contact design
- . Terminal guide plate ensures true positioning of PC tails
- . Post-plated terminals for high reliability
- . Polarizing key posts and guide walls secure code keys and provide proper mating
- . PCB retention pegs

### SPECIFICATIONS:

- . Current rating: 3.0A
- . Voltage rating: 1000V
- . Temperature range: -55°C ~+ 125°C
- . Contact resistance: 10mΩ max.
- . Insulation resistance: 5000mΩ min.
- . Dielectric withstanding voltage: 750V AC

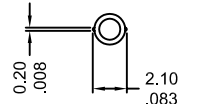
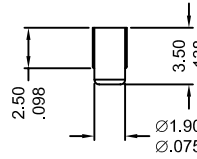
UNIT: MM  
INCH



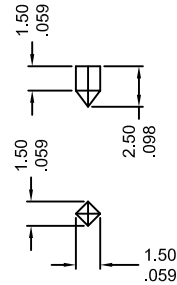
Recommended P.C Board

Hole Layout

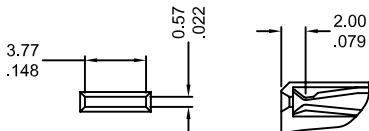
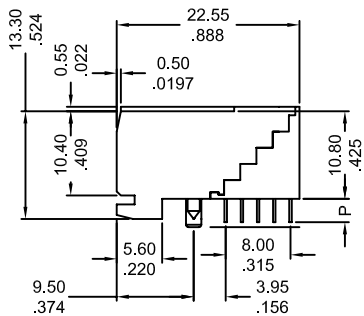
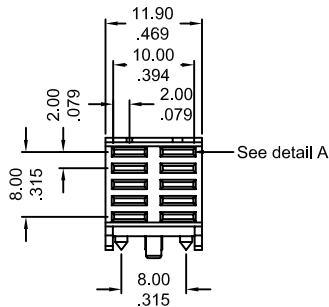
Thickness:  $\frac{1.60}{.063}$  &  $\frac{2.40}{.094}$



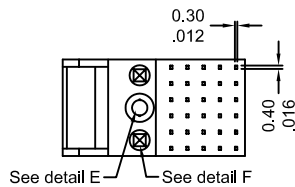
Detail E  
(Scale 2:1)



Detail F  
(Scale 2:1)



Detail A  
(Scale 2:1)



## Ordering Information 24884 Series Press Fit and Solder Dip

Series No.	No. Of Contact	DIP Style "P"	
24884	- 10F	1	- PB
24884 Series	10F	1:solder for PBC 1.6mm (P= $\frac{2.90}{.114}$ ) 2:solder for PBC 2.4mm (P= $\frac{3.60}{.142}$ ) 3:press fit (P= $\frac{2.90}{.114}$ )	RoHs