

.200" (5.08mm) Disk Drive Power Connection System, IDC Connector

2430 IDC Series IDC Female Connector

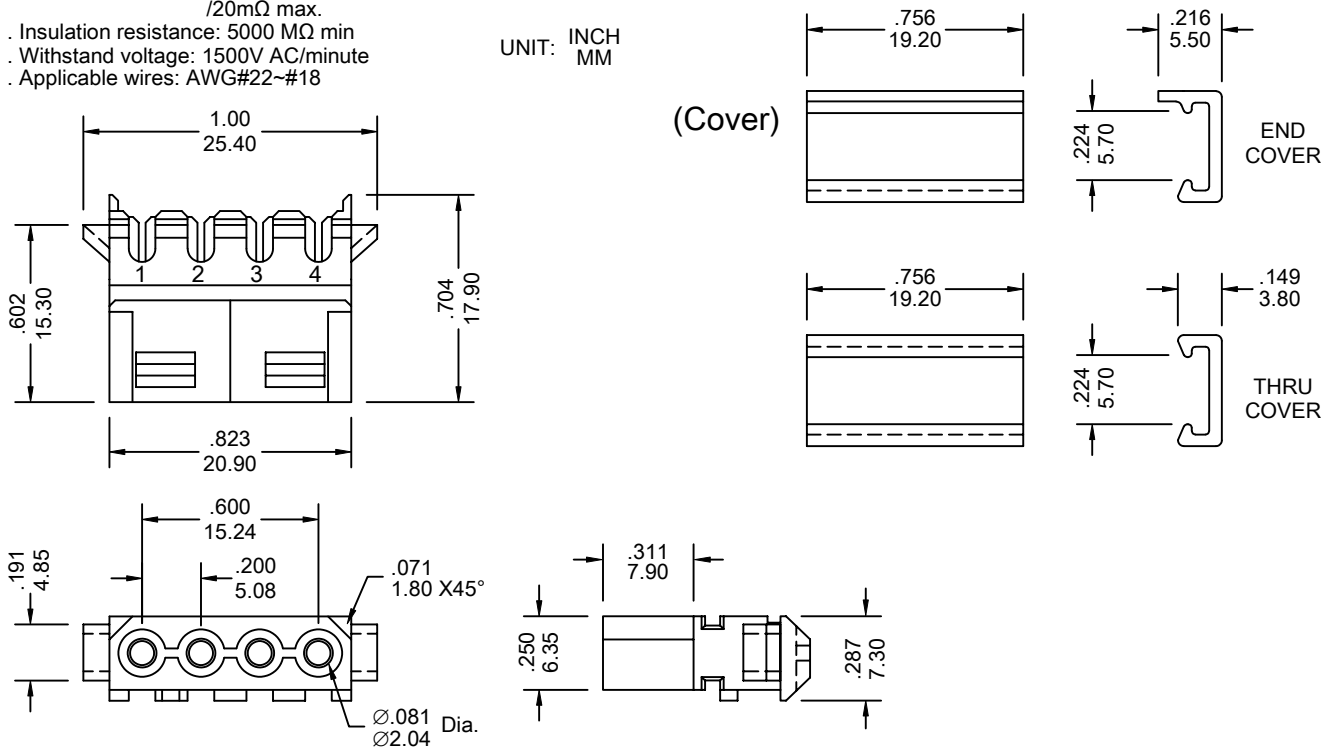
FEATURES:

- . 4 circuits
- . Wire-to-wire and wire-to-board insulation displacement
- . End grips for easy unmating
- . Housing detents provide positive retention
- . Mates with .084" [2.13mm] crimp terminal housing [2440 or 2470]
- . Housing Nylon [UL 94V-2] or [UL 94V-0]
- . Terminal retention to housing - 8lbs. [3.63kg] minimum

SPECIFICATIONS:

- . Current rating: 7A AC, DC
- . Voltage rating: 250V AC, Maximum
- . Temperature range: -40°C ~ +105°C AC.
- . Contact resistance: Initial Value/10mΩ max.
After environmental testing /20mΩ max.
- . Insulation resistance: 5000 MΩ min
- . Withstand voltage: 1500V AC/minute
- . Applicable wires: AWG#22-#18

UNIT: INCH
MM



Ordering Information 2430-IDC Series Cover

Series No.	No. of Contacts	Cover Type	Material	
2430-IDC	- 04P	- T	- V2	- A
2430-IDC Series	04P	T: Thru E: End	V0: UL 94V-0 ,NYLON V2: UL 94V-2 ,NYLON	RoHs

Ordering Information 2430-IDC Series

Series No.	No. Of Contacts	Contact Plating	Wire Gager	Material	
2430-IDC	- 04P	T	18	- V2	- PB
2430-IDC Series	04P	T: Tin S1: Gold Flash S5: 5u" Gold S10: 10u" Gold S15: 15u" Gold S30: 30u" Gold [S: Selective Gold]	18 20 22	V0: UL 94V-0 ,NYLON V2: UL 94V-2 ,NYLON	RoHs