

.100"X.100" (2.54mmX2.54mm) Grid Dual Row PCB Header



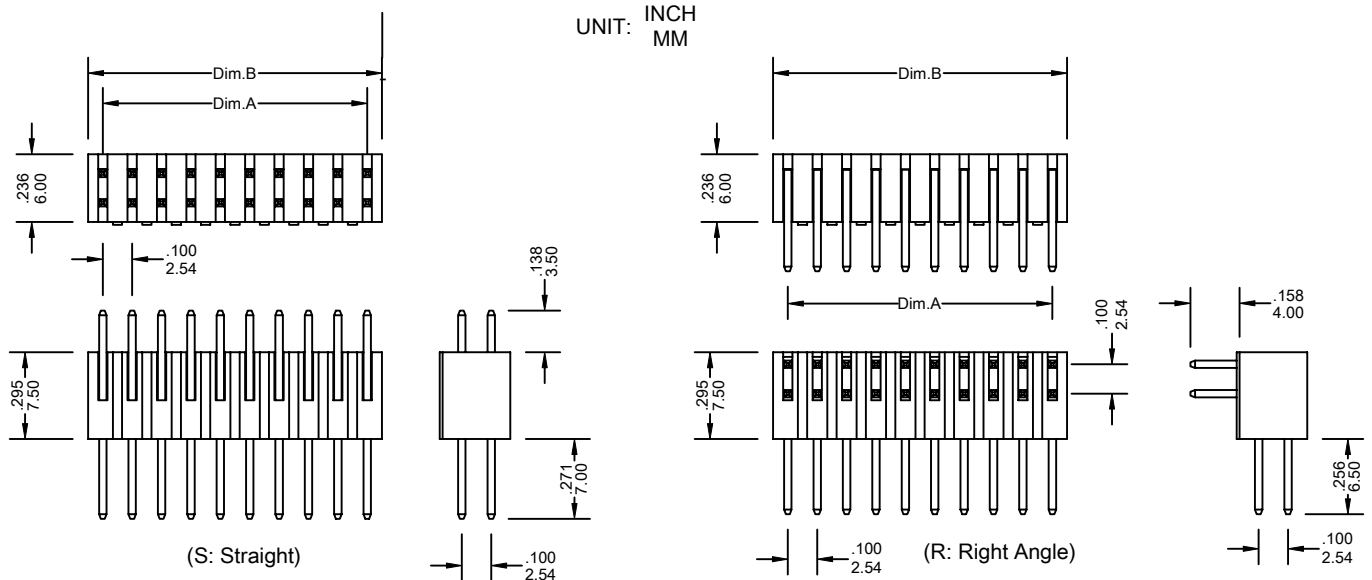
2300 Series

FEATURES:

- . 8-60 Circuits
- . .025"[0.64mm] Square wire pins
- . PBT + 30% Glass Fiber [UL 94V-0]
- . Stackable end-to-end
- . Straight and right angle pins

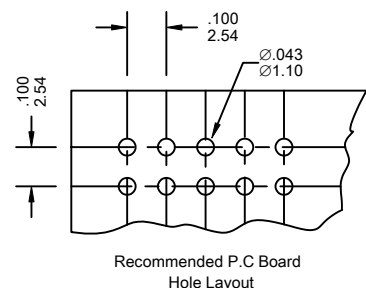
SPECIFICATIONS:

- . Current rating: 3A AC. DC
- . Voltage rating: 250V AC. Maximum
- . Temperature range: -40°C ~ +105°C
- . Contact resistance: Initial Value/10mΩ max.
After environmental testing /20mΩ max.
- . Insulation resistance: 5000 MΩ min
- . Withstand voltage: 1500V AC/minute
- . Applicable P.C board thickness: .063"[1.6mm]



Ordering Information 2300 Series

Series No.	No. of Contacts	Contact Type	Contact Plating	
2300	2X10P	S	G1	PB
2300 Series	2X04P 2X13P 2X05P 2X17P 2X07P 2X20P 2X08P 2X25P 2X10P 2X30P	S: Straight R: Right Angle	T: Tin G1: Gold Flash G5: 5u" Gold G10: 10u" Gold G15: 15u" Gold G30: 30u" Gold [G: Full Gold]	RoHs
* PINS LENGTH CAN BE CHANGED TO COUSTOM'S SPECIFICATION				



Dimensional Information

Circuits	Dim.A± .008 0.20	Dim.B± .008 0.20	Circuits	Dim.A± .008 0.20	Dim.B± .008 0.20	Circuits	Dim.A± .008 0.20	Dim.B± .008 0.20
8	.300 7.62	.400 10.16	20	.900 22.86	1.00 25.40	50	2.40 60.96	2.50 63.50
10	.400 10.16	.500 12.70	26	1.20 30.48	1.30 33.02	60	2.90 73.66	3.00 76.20
14	.600 15.24	.700 17.78	34	1.60 40.64	1.70 43.18			
16	.700 17.78	.800 20.32	40	1.90 48.26	2.00 50.80			