



.165" (4.20mm) Dual Row Right Angle Header

15569 Series

(Plug)

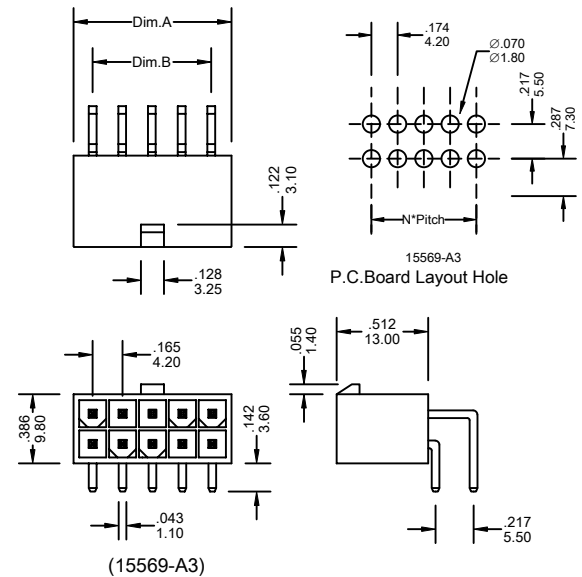
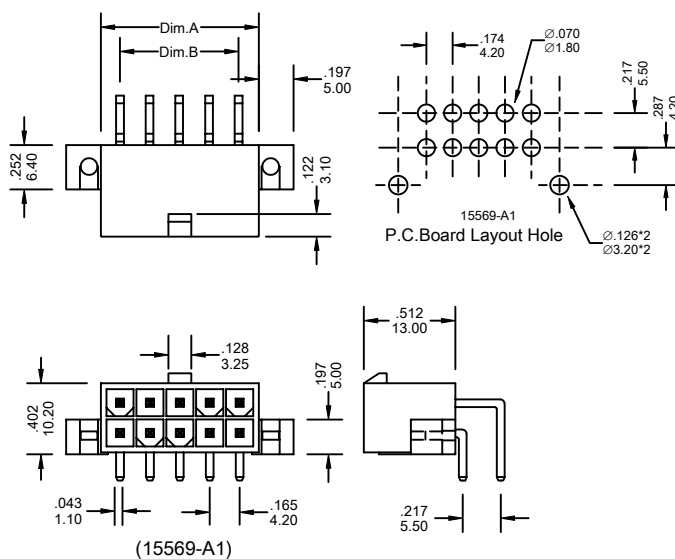
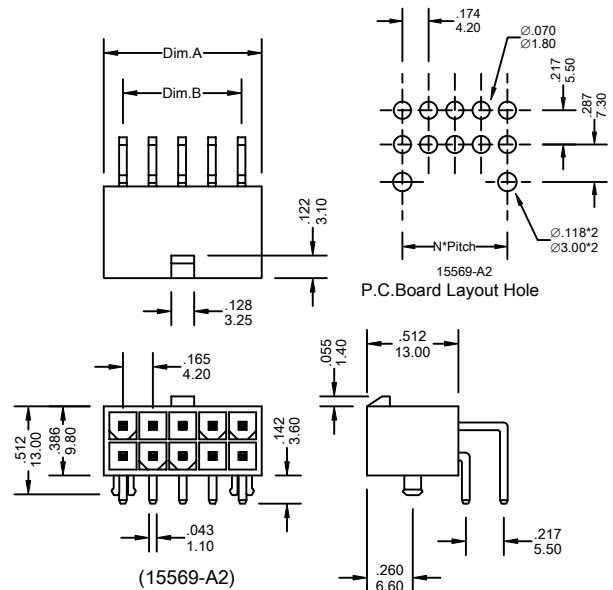
FEATURES:

- . 2-24 Circuits
- . Positive Housing locks
- . Nylon, [UL 94V-2] or [UL 94V-0], Nature
- . 10 milliohm contact resistance
- . Straight Angle, Dual Row Peg Mounted
- . Fully isolated terminals
- . Low engagement force terminals

UNIT: INCH
MM

SPECIFICATIONS:

- . Current rating: 9A AC. DC. Per circuit
- . Voltage rating: 600 (RMS)
- . Temperature range: -40°C ~ +105°C
- . Contact resistance: Initial Value/10mΩ max.
After environmental testing
/20mΩ max.
- . Insulation resistance: 5000 MΩ min
- . Withstand Voltage: 1500V AC/minute
- . Applicable PC board thickness: .070"[1.78mm] max



Ordering Information 15569 Series

Series No.	No. of Contacts	Contact Plating	Contact Type	Material	
15569	2X07P	T	A1	V0	PB
15569 Series	2X01P ~ 2X12P	T: Tin G1: Gold Flash G5: 5u" Gold G10: 10u" Gold G15: 15u" Gold G30: 30u" Gold [G: Full Gold]	A1: With Flanges A2: With Pegs A3: Without Flanges & Pegs	V0: UL 94V-0,Nature V2: UL 94V-2,Nature	RoHs

Dimensional Information

Circuits	Dim.A± .008 0.20	Dim.B± .008 0.20	Circuits	Dim.A± .008 0.20	Dim.B± .008 0.20	Circuits	Dim.A± .008 0.20	Dim.B± .008 0.20
2	.213 5.40	—	4	.378 9.60	.165 4.20	6	.543 13.80	.331 8.40

* FOR CIRCUIT SIZES 8 THROUGH 24 ADD .165" OR 4.20MM FOR EACH ADDITIONAL PIN.