

.118" (3.00mm) Dual Row Housing

13025 Series (Receptacle)

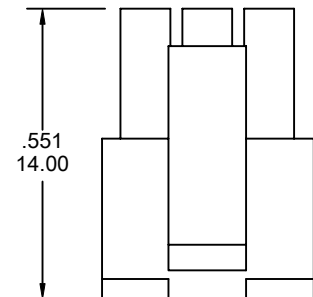
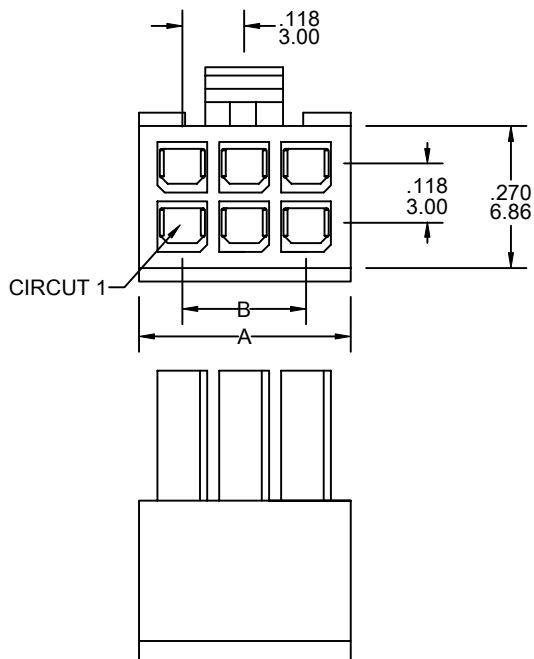
FEATURES:

- . 2-24 Circuits
- . Housing: Nylon, [UL 94V-0]
- . Contact: Phosphor Bronze
- . Plating: Tin or Gold
- . Positive latching to mating headers or plugs
- . Fully isolated terminals
- . Fully polarized to mating headers and plugs
- . Accepts double cantilever crimp terminal [13025-T]

SPECIFICATIONS:

- . Voltage rating: 250V
- . Current rating: 5A AC, DC
- . Contact Resistance: 10mΩ max
- . Withstand Voltage: 1500V AC/minute
- . Insulation resistance: 1000 MΩ min

UNIT: INCH
MM



Ordering Information 13025 Series

Series No.	No. of Contacts	
13025	- 2X03P	- A
13025 Series	2X01P ~ 2X12P	RoHs

Dimensional Information

Circuits	Dim.A± .008 0.20	Dim.B± .008 0.20	Circuits	Dim.A± .008 0.20	Dim.B± .008 0.20	Circuits	Dim.A± .008 0.20	Dim.B± .008 0.20
2	.152 3.85	—	4	.270 6.85	.118 3.00	6	.388 9.85	.236 6.00

* FOR CIRCUIT SIZES 8 THROUGH 24 ADD .118" OR 3.00MM FOR EACH ADDITIONAL PIN.